



Scheduling made easy for manufacturers

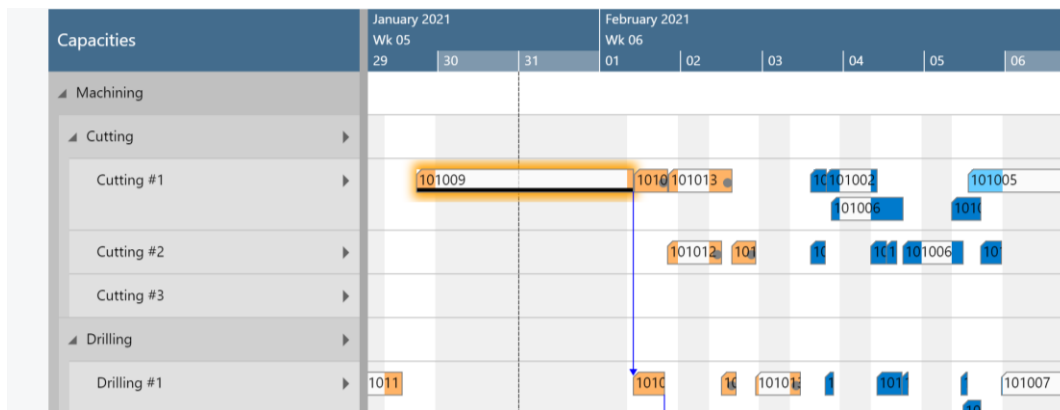
Easy drag & drop production scheduling for Microsoft Dynamics 365 Business Central

Have more control over your shopfloor

See your production schedule at one glance. All production orders, all machine centers, all work centers. Identify bottlenecks, notice late orders and understand all the dependencies. Take corrective actions in case of unplanned incidents – fast and easy-to-understand.

Visual Production Scheduler for Dynamics 365 Business Central

The Visual Production Scheduler (VPS) is your graphical frontend to standard Dynamics 365 Business Central manufacturing. The VPS provides you with a comprehensive view of your entire schedule. This enables you to make easy-to-understand drag & drop changes. That way, you can improve your delivery time commitments and can utilize resources better.



Why planners like our Visual Production Scheduler

The VPS simplifies the production scheduling with Business Central.

By using the VPS, customers gain:

- **Ability to make faster and better decisions** due to seeing the schedule at one glimpse
- **Happier clients** as they get enabled to make reliable delivery time commitments
- **Better use of resources** by maximizing the throughput

Seamless integration

- Full integration with Microsoft Dynamics 365 Business Central manufacturing
- No “database in-between”. Changes in VPS are saved into Business Central database
- Many short-cuts from planning board to standard Business Central dialogs & cards

Gain transparency

- See production schedule at one look
- All production orders, all work centers, all machine centers
- Detect bottlenecks
- Manage late orders
- Understand all dependencies

Interact - fast

- Quickly react to any unplanned incidents such as delayed orders or machine break-downs
- Drag & drop changes for production orders; then see the impact
- Reassign work from one machine/ work center to another

CUSTOMER CASE

Military precision in production planning

“The VPS has enabled us to execute our orders with military precision. All the production orders are planned and proactively monitored to ensure the delivery dates are met as promised.”

Charles Kebaso,
Engineering Manager,
Davis & Shirliff



Visual scheduling yields production execution excellence

Improved delivery time commitments

- Everybody can see and understand the current production load
- Simulate orders to determine a reliable delivery date – and keep it → get happier customers

Maximized throughput

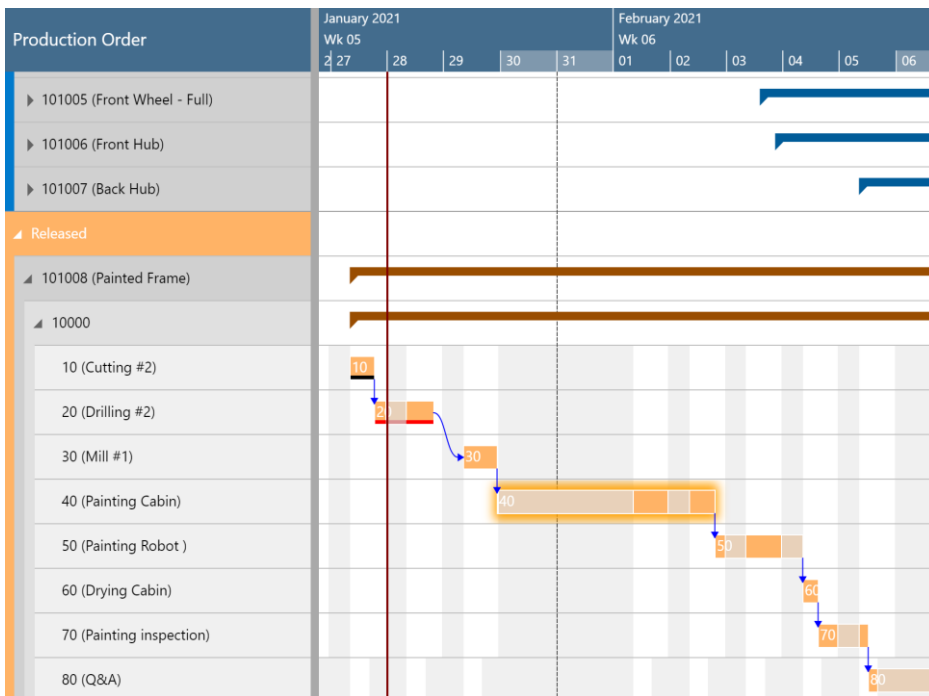
- See bottlenecks immediately
- Recognize, where you need to outsource
- Achieve more by better utilizing your resources

Reduced planning workload

- Visual alerts let the planner focus on what is important
- Data is visual, and no longer hidden in tables
- Focus on critical orders plus faster understanding plus reduced manual work yields you more time for other tasks

Visual Production Scheduler

- Available for Microsoft Dynamics 365 Business Central
- Available for cloud & on-prem
- Made for the web client
- Fully integrated
- Easy-to-install
- Real-time
- Intuitive interface
- Affordable
- Made to meet Microsoft's highest standards: available on AppSource



Simple drag and drop to immediately change your production plan

Change the timing of operations by horizontal drag & drop. Or change the assignment of an operation from one machine center to another by vertical drag & drop. Or do both.

See the impact on other production orders and the resulting capacity utilization immediately.

Directly save back any change to your Business Central database.

This is visual scheduling – no rocket science.



Why NETRONIC

Our mission is to empower every SMB organization to gain operational agility with visual scheduling.

We are obsessed about operational agility. We found it is the key for companies to operate and grow in unpredictable environments.

We are a multi-national team and have more than 40+ years of experience with visual scheduling. 60%+ of our revenue is with international clients. We are independent and family-owned.